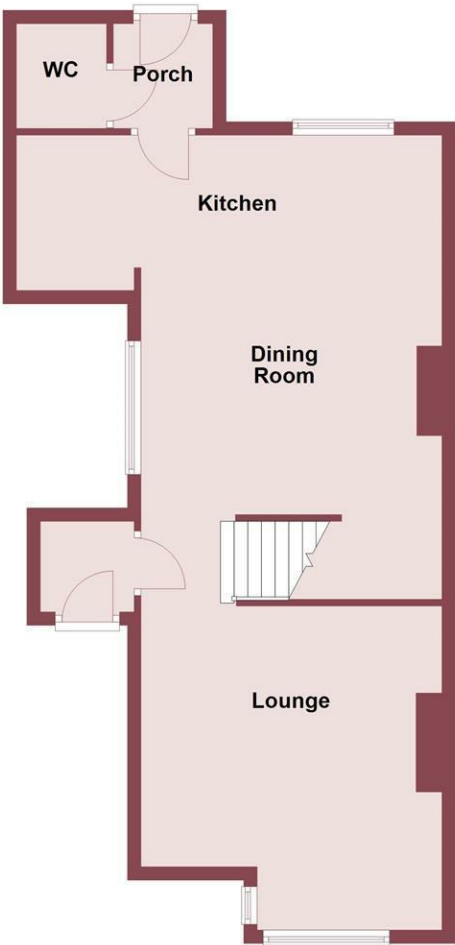




Ground Floor



First Floor



Oaklands Drive, Heswall, Wirral CH61 6UU

£325,000

3 Bedroom

2 Reception

1 Bathroom

D

**\*\*Recently Renovated - Three Bedroom Semi - Close To Centre Of Heswall - No Onward Chain!\*\***

Hewitt Adams is delighted to offer to the market this stunning RECENTLY RENOVATED three bedroom COTTAGE STYLE SEMI on the SOUGHT AFTER Oaklands Drive in Heswall. A fantastic location due to the CLOSE PROXIMITY to the CENTRE OF HESWALL, and with Heswall Primary being a STONE'S THROW AWAY. An ideal FIRST TIME BUY or starter family home.

Having recently been PROFESSIONALLY DEVELOPED the property comes to the market in TURN-KEY CONDITION having been taken back to brick in most places, with NEW KARND EADN FLOORING, NEW OPEN-PLAN kitchen living area, updated bathroom, UPDATED ELECTRICS. NEW CENTRAL HEATING and fully RE-DECORATED. As well as a significant amount of work in the garden creating a lovely area for outdoor entertaining.

In brief the accommodation affords; entrance porch, lounge, open-plan kitchen dining / living area and downstairs W.C. Upstairs there are three bedrooms and a family bathroom.

With a LARGE DRIVEWAY and a landscaped rear garden laid to patio and lawn.

Sold with NO ONWARD CHAIN - Call Hewitt Adams on 0151 342 8200 to view.



Front Entrance

Into;

Porch

NEW porch. Tiled floor, door into;

Living Room

13'02 x 12'04 (4.01m x 3.76m)

New Karndean flooring, radiator, power points, attractive feature porthole style window, double glazed window

Open Plan Kitchen Dining / Living Room

18'07 x 12'7 (5.66m x 3.84m)

Double glazed window, radiator, power points, new Karndean flooring, fireplace, fitted kitchen, range-style cooker, inset sink, space for white-goods

Utility Area

Karndean floor, rear door

W.C

W.C, wash hand basin

UPSTAIRS

Bedroom One

11'9 x 12'7 (3.58m x 3.84m)

Double glazed window, radiator, power points, new carpets

Bedroom Two

9'3 x 9'3 (2.82m x 2.82m)

Double glazed window, radiator, power points, new carpets

Bedroom Three

9'1 x 9'3 (2.77m x 2.82m)

Double glazed window, radiator, power points, new carpets

Bathroom

Comprising bath with shower above, low level w.c, wash hand basin, double glazed window

EXTERNALLY

With a LARGE DRIVEWAY and a landscaped rear garden laid to patio and lawn.

